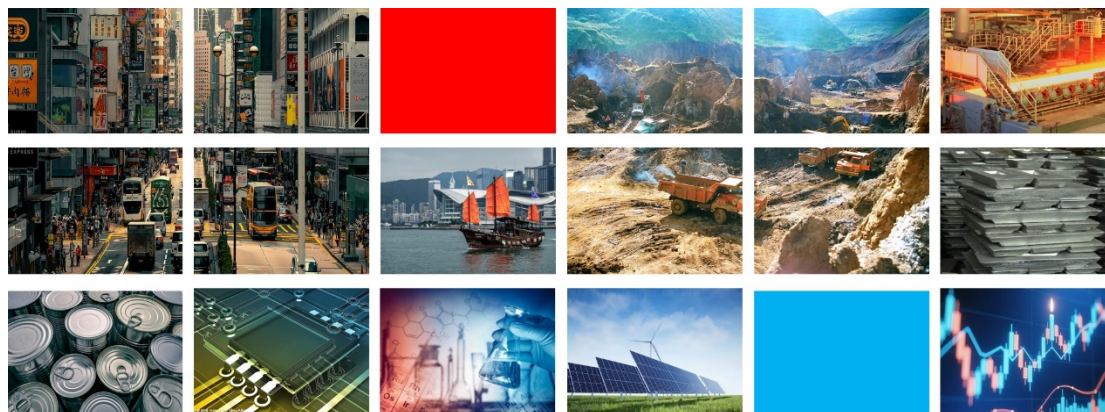


Asia Tin Week 2025

Hong Kong China

19-21 November 2025



Asia's pivotal Role in Building a Resilient Global Tin Supply Chain

Following the success of Asia Tin Week 2024 in Shanghai, we are proud to bring the event to **Hong Kong** this year, a city with growing prominence as a global commodity hub and gateway to Asia. The recent launch of LME-approved warehouses in Hong Kong, with the first 25 tonnes of tin already being stored as warrants alongside other LME registered brand of copper, nickel, and zinc, further cements the city's strategic position in the international metals trade.

Asia Tin Week 2025 will also be a milestone. It's the first time the event is to be held outside Mainland China, signaling a bold step towards shaping it into a truly pan-Asian, globally connected platform for the tin industry.

The event will dive into the following key topics:

- **Shape the Future of Tin:** Join global leaders redefining tin's role in critical minerals, energy transition, and digitalization.
- **Asia at the Core:** Discover how Asia is driving a resilient, sustainable, and financially vibrant global tin supply chain.
- **From Mines to Markets:** Gain exclusive market insights, price outlooks, and investment signals from top industry analysts.
- **Innovate with Tin:** Explore breakthroughs in energy storage, recovery from E-wastes, and green electronics powering the next tech revolution.
- **See Strategy in Action:** Explore how LME-approved warehouses in Hong Kong are boosting Asia's tin futures trading and strengthening global market connectivity.
- **Sustainability Starts Here:** Dive deep into ESG imperatives, circular economy strategies, and the path to responsible tin sourcing.



Conference Information

Date	Time	Activities
Wednesday, 19th Nov.	10:00-18:30	Registration
	18:30-20:30	Welcome Reception
Thursday, 20th Nov.	09:00-18:00	Conference Sessions - Market and Sustainability
	19:00-21:00	Asia Tin Week Dinner
Friday, 21st Nov.	09:00-12:30	Conference Sessions - Technology
	13:30-20:00	Social Networking * (55 US\$ fee applies)

** Note: Social Networking -Sightseeing tour- Hong Kong's Tai O Fishing Village*

Tai O-one of Hong Kong's last traditional fishing ports, is a place where crisscrossing waterways replace bustling streets and stilt houses built along the water exude a homely atmosphere. Situated on the western part of Lantau Island in the New Territories of Hong Kong, Tai O is one of the most famous fishing villages in Hong Kong, with part of



the village located on Tai O Island. The water village charm of Tai O is unique, earning it the nickname 'Hong Kong's Venice'. Due to its island location, Tai O is distant from the bustling city centre and has been less affected by urbanisation, thus preserving Hong Kong's early fishing village landscape. Tai O is picturesque and vibrant, with elevated stilt houses on the waterways serving as fishermen's dwellings. Rivers and streams flow orderly through rows of ancient stilted buildings, highlighting the unique fishing village ambience.

Numbers are limited, book your place when registering for the event.





Multiple Sponsorship Opportunities

- Platinum sponsor
- Gold sponsor
- Silver sponsor
- Welcome Reception
- Canvas Handbag
- Buffet Lunch
- Lanyard
- Booth
- Souvenir

Conference Registration

All delegate fees detailed below include Welcome reception, Conference Sessions, lunch on 20th & 21st November, and the Asia Tin Week Dinner on 20th November.

	Early Booking (US\$, Until 20th October 2025)	Full Fees (US\$)
Delegate	\$1590	\$1930
ITA Board Member	\$1400	\$1740
Speaker	\$950	\$1050
Sightseeing tour	\$ 55	\$ 55

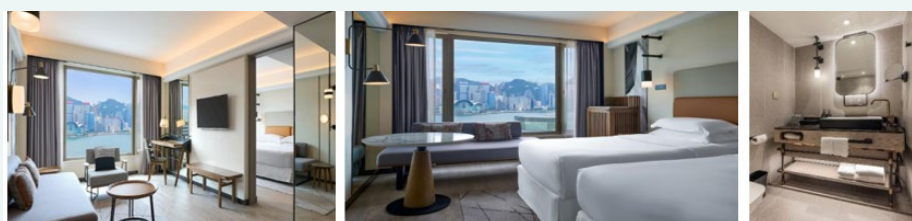
**Accommodation and travel are not included in the above fees.*

ASIA TIN WEEK 2025



Venue Information

Sheraton Hong Kong Hotel & Towers



20 Nathan Road, Tsim Sha Tsui Kowloon, Hong Kong China.

Room Type	Daily Room Rates
Guest Room King	1600(HKD)
Guest Room Twin	1600(HKD)

**Hotel's room rates are subject to applicable taxes (currently 3%, subject to change without prior notice) and service charge (currently 10%) in effect at the time of check-out.*

**Inclusive of in-room wired internet and Wi-Fi access.*

**Room rate includes 1 daily breakfast; an additional breakfast is available at HK\$150.00.*

Hotel booking: Please click [here](#).

For more information, please contact:

<u>ITRI (Beijing) Limited:</u>	<u>Cognition AM Ltd.:</u>
Alice Li: +86 18911761187 (Wechat & WhatsApp) Ethan Xie: +86 18811619376 (Wechat & WhatsApp) T: +86 10 68080915 E: itachina@internaitonaltin.org	Sue Butler or Chris Goodacre T: +44 (0)1727 876020 E: conferencing@internationaltin.org

